

# Information Technology

## Innovative IT jobs at ASML. Apply now!

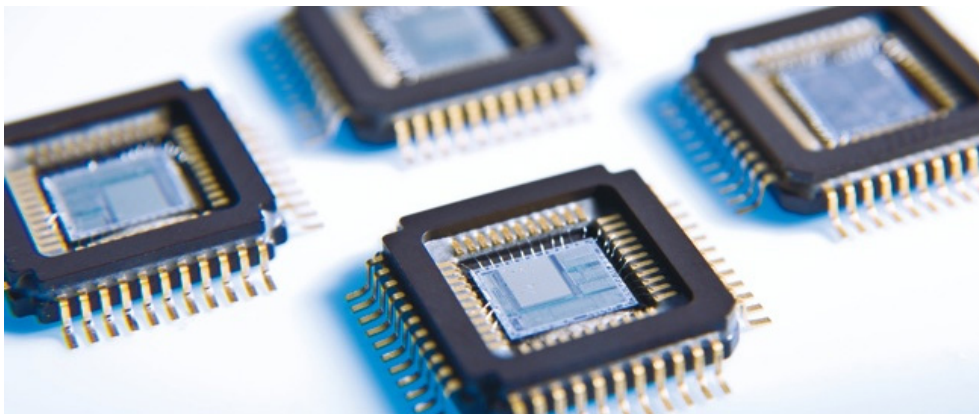
ASML is a company built on innovation. That's as true for our Information Technology department as it is for our industry-leading products.

As part of IT, you'll be responsible for ensuring ASML has the business processes and IT systems it needs to deliver the latest and greatest lithography solutions in the shortest time. You'll need to understand our products, processes and organization, and interface with colleagues in the business so you can identify and define the right solutions for their needs. That could involve anything from streamlining financial processes to exploring and implementing brand new technologies like computing in memory.

### Benefits of working in IT at ASML:

- Working with cutting edge IT technology
- 300 experienced IT colleagues

[Click here to view all current vacancies in the IT department](#)



### Information Technology at ASML: A broad perspective

In today's semiconductor industry there is a huge amount of cooperation between equipment suppliers like ASML and chip manufacturers. So you'll be working as part of a wider ecosystem which demands transparency. At the same time, the industry is extremely dynamic, and the needs of our business and our customers can change fast. It's up to IT to deliver business systems that enable that blend of transparency and agility. In addition, ASML has grown rapidly in the last few years bringing new challenges for ITMS to simplify processes and applications, and integrate business systems from newly acquired companies.

The department comprises approximately 200 full-time professionals and around 150 contractors at any one time. A very project-oriented organization, it is active in demand management, architecture, system building, service-level management and infrastructure and application support.

### A IT career to match your skills

At IT, you can define your own career path in people, project or content management, switching between the three and even between IT and business functions if you choose. You'll be developing solutions for ASML's highly skilled and analytical workforce, so the ability to convince people with words and data is essential - as are a strong personal drive and ability to take ownership. And as we outsource development and support wherever possible, supplier and project management are important parts of the job too.

**Watch the embedded video to learn more about working in IT at ASML**